



Also available in
Plus version
with lancets and
disinfectant wipes

NADAL[®] COVID-19 IgG/IgM Rapid Test

Rapid test for the detection of anti-SARS-CoV-2 IgG and IgM in human whole blood, serum or plasma samples

About the virus

The name 'coronavirus' is derived from the characteristic crown-shaped appearance of the surface proteins (so-called spikes) of its envelope (Lat. *corona*: crown). The *Coronaviridae* family (CoV) includes approximately 40 known species. Many of these viruses cause disease in mammals and birds. Human coronaviruses (hCoVs) were first described in 1965. The known human pathogenic representatives are primarily members of the *Betacoronavirus* genus and can cause illnesses ranging from the common cold and bronchitis to severe acute respiratory infection (SARI) and pneumonia.

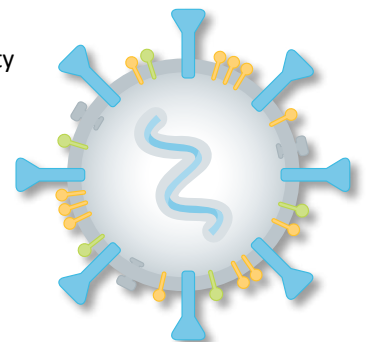
In late December 2019, a novel human pathogenic betacoronavirus appeared. The coronavirus that is currently circulating, provisionally known as 2019-nCoV and officially designated as SARS-CoV-2, is the third human pathogenic coronavirus in the last two decades, and the seventh known overall. It follows severe acute respiratory syndrome (SARS-CoV) in 2002 and Middle East respiratory syndrome (MERS-CoV) in 2012. The clinical manifestation of the current SARS-CoV-2 is officially designated as COVID-19.

NADAL[®] COVID-19 IgG/IgM Rapid Test

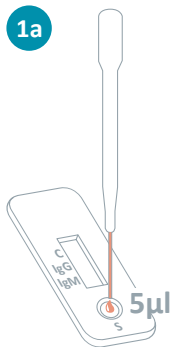
The NADAL[®] COVID-19 IgG/IgM Rapid Test is a chromatographic lateral flow immunoassay for the qualitative detection of anti-SARS-CoV-2 IgG and IgM in human whole blood, serum or plasma samples. It is important to note that in the early stages of infection, SARS-CoV-2 IgG and IgM may be below the detection limit of the test. The test is intended as an aid in the diagnosis of an infection with SARS-CoV-2 and the detection of an immune response to COVID-19 infection. The test procedure is not automated and requires no special training or qualification.

Your benefits at a glance

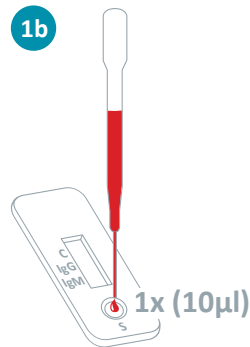
- ✓ High sensitivity and specificity
- ✓ Easy to use
- ✓ Fast and reliable test results in just 15 minutes
- ✓ Testing can be performed using whole blood (from venipuncture or fingerstick), serum or plasma
- ✓ Test can be stored at room temperature



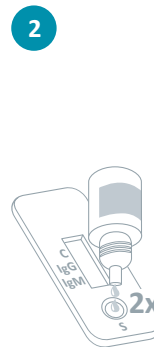
Test procedure



Holding the pipette vertically, draw the **serum or plasma sample** up to the first widening (approx. 5 µL) and dispense it into the sample well (S) of the test cassette.



Holding the pipette vertically, dispense 1 drop (approx. 10 µL) of the **whole blood sample** into the specimen well (S) of the test cassette.



Holding the buffer bottle vertically, dispense 2 drops of buffer into the sample well (S) of the test cassette. **Avoid the formation of air bubbles.**



Wait until the coloured line(s) appear(s). Read the test result after exactly 15 minutes.

More detailed information can be found in the instructions for use.

Result interpretation



NADAL® COVID-19 IgG/IgM Test

Rapid test for the detection of anti-SARS-CoV-2 IgG and IgM in human whole blood, serum or plasma samples

Product	Sample material	Sensitivity	Specificity	Product code	Pack size
NADAL® COVID-19 IgG/IgM Test	Whole blood, serum or plasma samples	IgM: 93.7 % IgG: 98.8 %	IgM: 99.1 % IgG: 98.7 %	243003N-25	25 tests per pack
NADAL® COVID-19 IgG/IgM Plus Test				243004N-25	25 tests, 25 disinfectant wipes and 25 lancets per pack

Our **customer service team** is on hand to answer any questions you may have by telephone, via email or in a personal consultation. For details on **your local sales office and regional free phone numbers**, visit www.nal-vonminden.com.

We help you care!

Rapid Tests

Laboratory Diagnostics

Laboratory Service

Consulting & Service

Headquarters

nal von minden GmbH · Carl-Zeiss-Strasse 12 · 47445 Moers · Germany
 Chief Executive Officers: Sandra von Minden · Roland Meißner · Thomas Zander
 Commercial reg. Kleve · HRB 5679
 Tel.: +49 941 290 10-0 · Fax: +49 941 290 10-50

info@nal-vonminden.com
www.nal-vonminden.com